



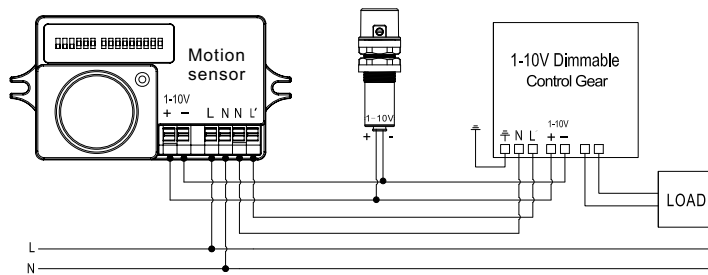
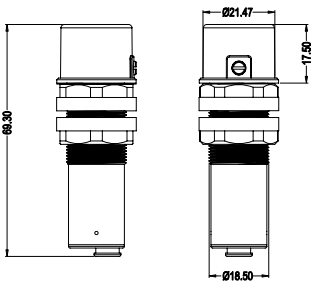
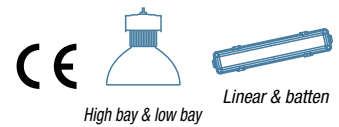
Daylight harvesting

5

Year Guarantee

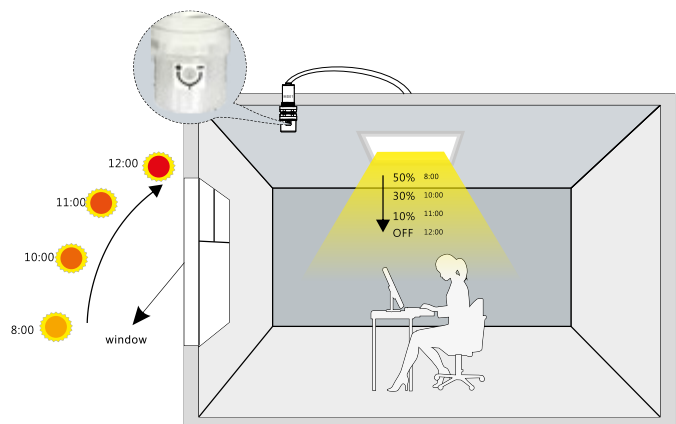
5 Year Guarantee

# MS01 Daylight Sensor

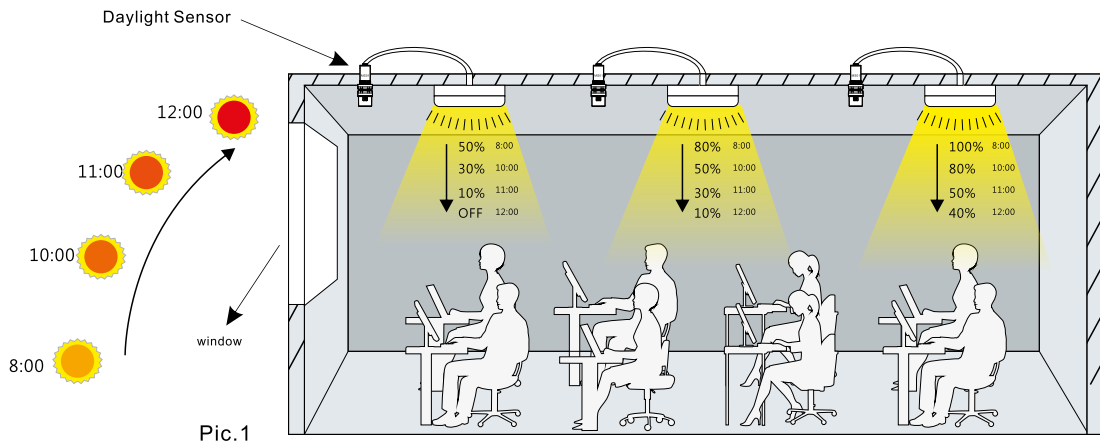


## SPECIFICATIONS

Operating voltage	1~10Vdc
Max.current sink	50mA(Maximum rating)
Dimming range	1% - 100%
Color coding of cable	Red+,Black-
Cable length	80cm
Detection angel	90°
Operating temperature	-0°C ~45°C
IP rating	IP20

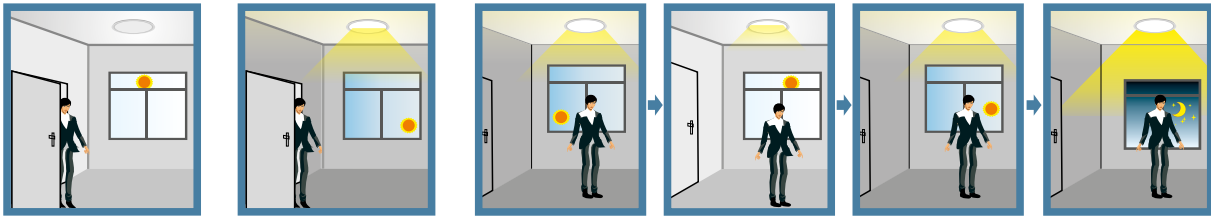


Connecting to 1-10V interface and using photocell to measure the ambient lux level and automatically calculate how much artificial light is needed.



Pic.1

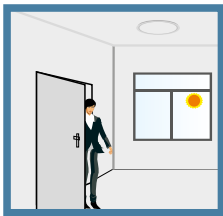
Accessories



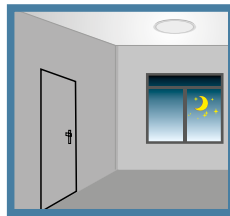
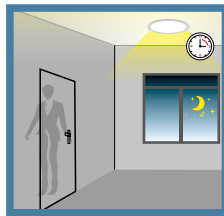
When the ambient light is larger than the present illumination level (Set by 1-10V daylight sensor), the lamp stays off.

When the ambient light is below the present illumination level, the lamp switches on when motion is detected.

The lamp light dims to maintain its present illumination level against the ambient light.



If there is sufficient ambient light, the lamp turns off at once, even with motion trigger.



If there is insufficient ambient light, the lamp dims to a stand-by dimming level (Set in the motion sensor) when no motion is detected during hold time, it will switch off after stand-by period.

		Function			
		Automatically switches on when motion is detected	Dimming Range	Dimming level at stand-by period	Automatically switches off
MS01	1-10V dimmable ballast or LED driver	N	1%~100%	N/A	N
MS01	ON-OFF function sensor + 1-10V dimmable ballast or LED driver	Y	1%~100%	N/A	Y
MS01	Dimming function sensor + 1-10V dimmable ballast or LED driver	Y	1%~100%	Remain the present level on the sensor	Y